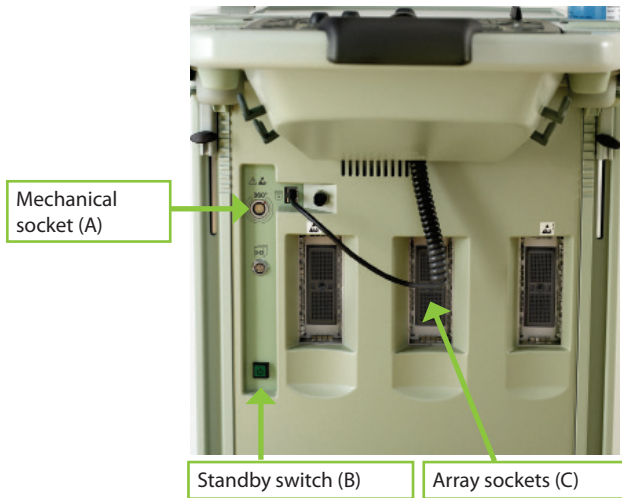


UltraView
Ultrasound Systems





Turn System On and Off

To turn system on:

- Press the green standby switch (B) ONCE. Wait until startup screen disappears. System is ready to use.

To turn system off:

- Make sure system is completely up and running. Press standby switch (B) ONCE.

Caution: Never unplug system from wall while it is running! Turn off system and wait for light on switch to go out before unplugging.

Connect Transducers

Array transducers

To connect:

1. Insert transducer plug into socket (C).
2. Turn locking lever on transducer plug clockwise.

To disconnect:

1. Turn locking lever on plug counterclockwise.
2. Remove plug from socket.

Mechanical transducers

To connect:

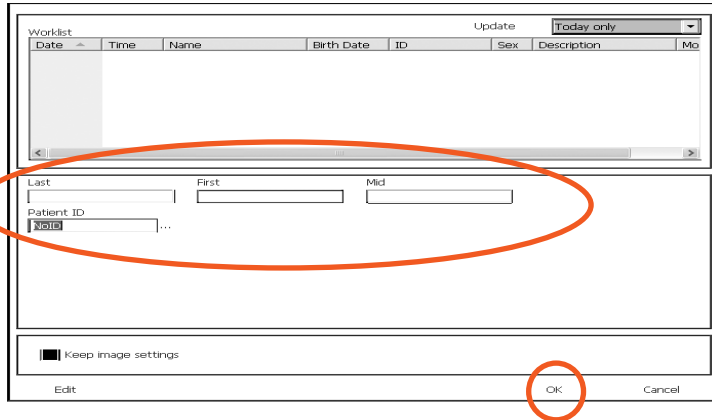
1. Align red mark on plug with red dot on transducer socket (A).
2. Insert plug in socket.

To disconnect:

1. Pull back on plug locking mechanism (collar).
2. Remove plug from socket.

Enter Patient Information


1. Press [ ID]. Patient window opens.



Work-List Update Today only

Date	Time	Name	Birth Date	ID	Sex	Description	Mo
------	------	------	------------	----	-----	-------------	----

Last: _____ First: _____ Mid: _____

Patient ID:  ...

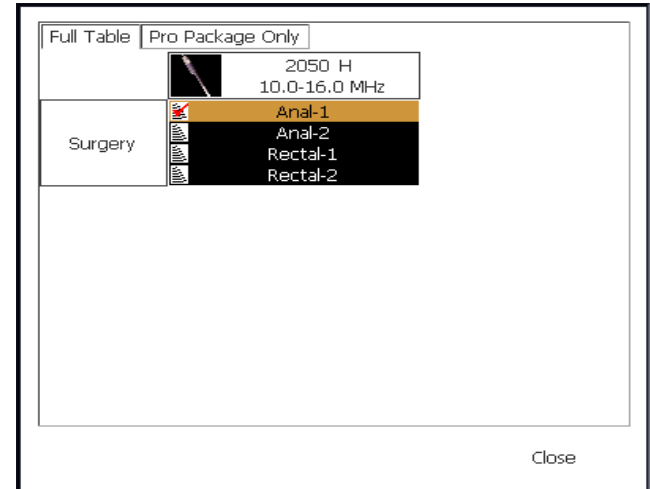
Keep image settings

Edit OK Cancel

2. Enter patient data. Use tab key to move from field to field.
3. Click **OK**.

Select Pro Package and Transducer Pre-set (Diagnostic Setup)

1. Press [].



Full Table Pro Package Only

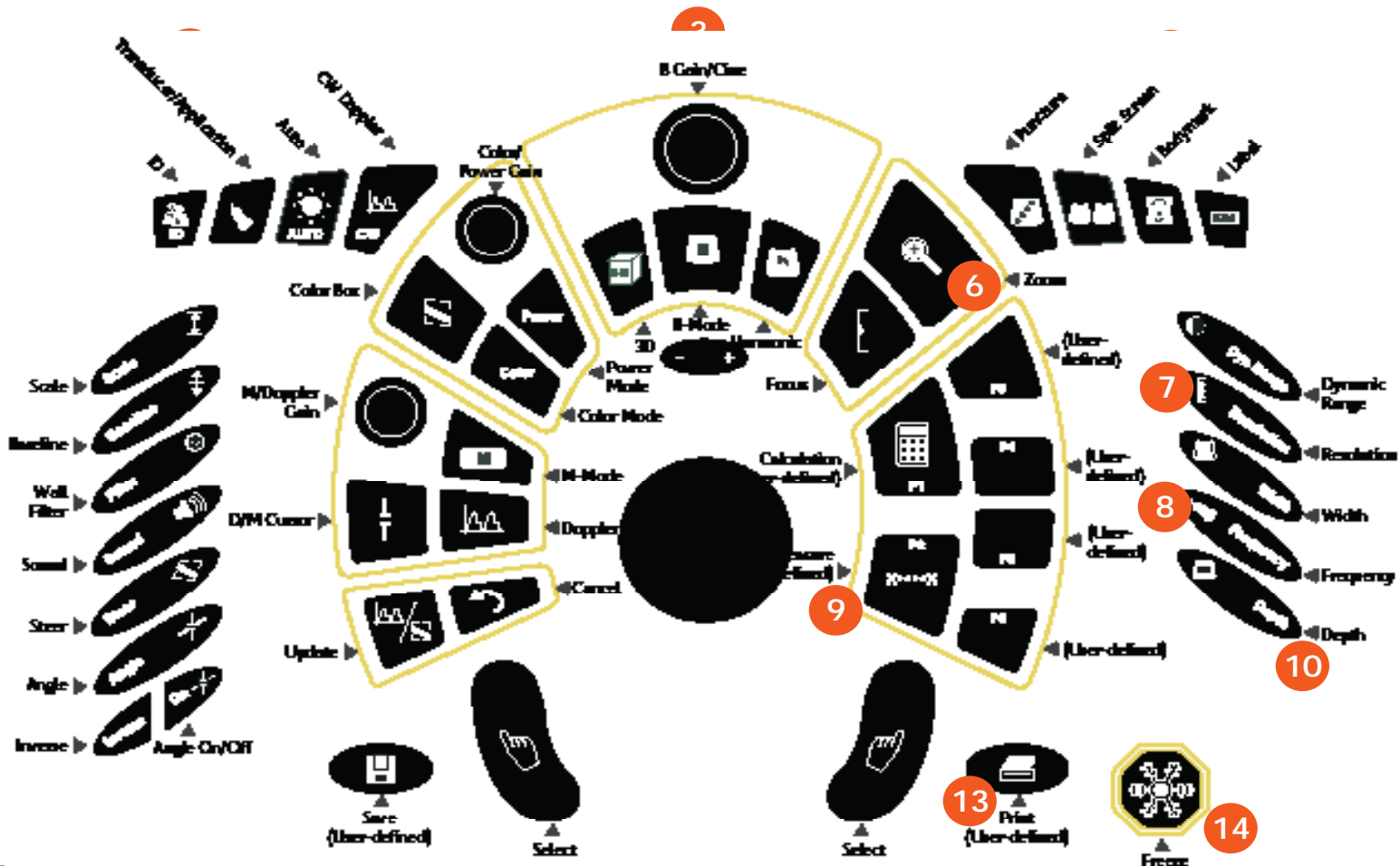
2050 H
10.0-16.0 MHz

Surgery

Anal-1
Anal-2
Rectal-1
Rectal-2

Close

2. Select Pro Package and Diagnostic Setup.
3. Click **Close**.



Frequently Used Keys

- 1 ID:** Opens Patient window to start examination.
- 2 Transducer/Application:** Press to select Pro Package or Diagnostic Setup.
- 3 Gain:** Brighter/Darker.
- 4 Puncture:** Activates puncture lines/brachy matrix.
- 5 Simultaneous/Split Screen:**
Activates simultaneous imaging.
Displays 2 screens.
- 6 Zoom:** Turns on the zoom box. Press again to zoom in. A third press resets the zoom area. A long press turns zoom off if it is on.

Works when image is frozen or not frozen.
- 7 Resolution:** Increases resolution (decreases scanning frame rate) or vice versa in B-mode or Color mode.
- 8 Frequency:** Changes MHz.
- 9 Basic Measure:** Activates cursors for basic measurement.
- 10 Depth:** Changes maximum depth (distance from transducer). Press + to make objects appear larger, - to make them appear smaller.
- 11 Save:** Stores image on hard drive.
- 12 Select/Click:** Press to select option.
- 13 Print:** Sends image to printer.
- 14 Freeze/Unfreeze the image.**



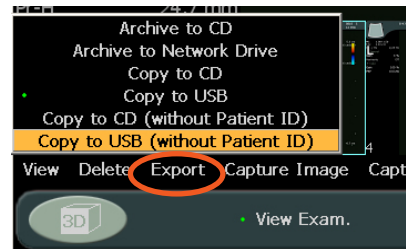
View Exam

1. Click **View Exam** at bottom of screen. Thumbnails of images and other documents in exam appear in image bar.
2. Point at image you want to view.
A magnifying glass icon appears in upper right corner of thumbnail.
3. Click magnifying glass. Little frame around it turns blue. Document is displayed in the scan area.

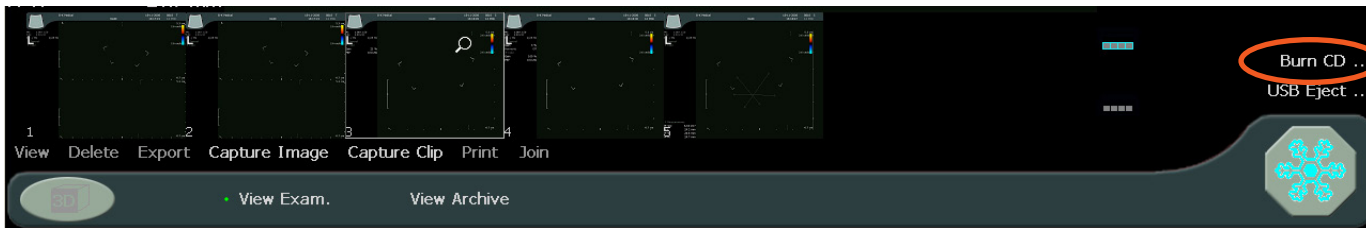
Copy to USB

Images are copied to USB devices immediately.

1. Insert memory device into USB port.
2. Click each image to be copied. Frame around image turns blue.
3. Click **Export** and **Copy to USB (without Patient ID)** or **Copy to USB**.



4. Click **USB Eject** to remove memory device.

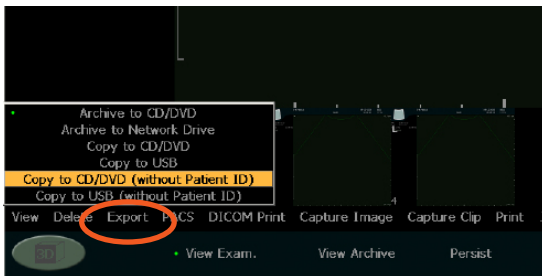


Copy to CD/DVD

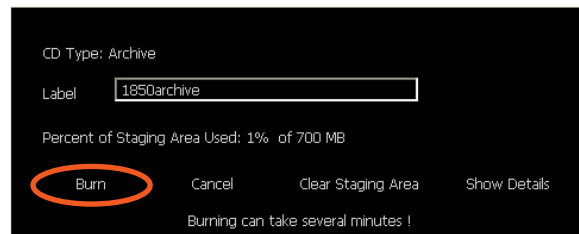
When you click **Copy to CD/DVD**, the selected images are **NOT** copied immediately to a CD or DVD. They are copied to a staging area.

To copy:

1. Click each image to be copied. Frame around image turns blue.
2. Click **Export** and **Copy to CD/DVD (without Patient ID)** or **Copy to CD/DVD**.



3. Insert a CD or DVD into DVD drive.
4. Click **Burn CD**.



5. Name (label) CD and click **Burn**.

P Shortcut Keys

P1: 

P2: X••••X

P3:

P4:

P5:

P6:



F Shortcut Keys

F1:

F2:

F3:

F4:

F5:

F6:

F7:

F8: Report

F9:

F10: Add pointer arrow to image

Your Notes

This Book is not a Complete User Guide

Before you use the system, you must read the Safety chapter in the 2202 *Pro Focus UltraView User Guide*. It contains safety information that is important for avoiding injury and for avoiding damage to the equipment. You must also read *Care, Cleaning & Safety*, which contains information about cleaning and disinfection as well as information about required inspections, calibration and maintenance. The *UltraView 2202 Advanced User Guide* contains detailed information for the advanced user.

www.bkmed.com

This guide is also available on the BK Medical website. Please go to the *Customer Service* section to download user manuals.

If you have comments about the user documentation, please write to us at info@bkmed.dk. We would like to hear from you.

© 2013 BK Medical

 BK Medical ApS, Mileparken 34, 2730 Herlev, Denmark. Tel: +45 44528100 Fax: +45 44528199 Email: info@bkmed.dk

Innovative Solutions for Life

Analogic Corporation creates innovative technology to improve the health and enhance the safety of people around the world. We are committed to providing the best solutions under the BK Medical brand name that advance medicine and save lives.



Analogic Corporation - Headquarters USA
3 Conant Drive, Peabody, MA 01960
Tel: +1-978-463-8000
analogic.com

BK Medical - Sales and Service USA
3 Conant Drive, Peabody, MA 01960
Tel: +1-978-463-8000
bkmed.com

BK Medical - Europe and Rest of World
Mileparken 34, 2730 Herlev, Denmark
Tel: +45 4452 8100
F: +45 4452 8199
bkmed.com

The name Analogic is a registered trademark of Analogic Corporation. The globe logo is a trademark of Analogic Corporation.